

RESEARCH ARTICLE

Open Access

Prognostic value of alveolar volume in systolic heart failure: a prospective observational study

Massimo Miniati^{1*}, Simonetta Monti^{2,3}, Matteo Bottai^{4,5}, Ivana Pavlickova², Claudio Passino^{3,6}, Michele Emdin³ and Roberta Poletti³

Abstract

Background: Ventilatory impairment is known to occur in patients with heart failure (HF). Alveolar volume (V_A) is measured by the dilution of an inert gas during a single breath-hold maneuver. Such measurement is sensitive to ventilatory disturbances. We conducted a prospective, observational study to establish the prognostic value of V_A in systolic HF.

Methods: We studied 260 consecutive patients who were hospitalized for systolic HF. All patients were evaluated under stable clinical conditions, before hospital discharge. Lung function studies included spirometry and determination of the lung diffusing capacity for carbon monoxide (DL_{CO}) by the single-breath method. We also measured the cardiothoracic ratio on frontal chest radiographs, and the circulating levels of N-terminal pro-hormone of B-type natriuretic peptide (NT-proBNP). The hazard ratio (HR) of death was estimated with Cox regression, and the percentiles of survival time with Laplace regression. For survival analysis, V_A was categorized as $<80\%$ ($n = 135$), or $\geq 80\%$ of the predicted value ($n = 125$).

Results: Follow-up had a median duration of 2.7 years (interquartile range, 1.1 to 4.2 years). The crude mortality rate was 27% in the whole sample, 36% in patients with $V_A < 80\%$, and 16% in those with $V_A \geq 80\%$. The HR of death was 2.3-fold higher in patients with $V_A < 80\%$ than in those with $V_A \geq 80\%$ ($p = 0.002$). After adjusting for age, New York Heart Association class III-IV, cardiothoracic ratio >0.5 , NT-proBNP, persistent atrial fibrillation, DL_{CO} , COPD comorbidity, use of beta-blockers and angiotensin converting enzyme inhibitors, the HR decreased to 1.9 but remained statistically significant ($p = 0.039$). Two percent of the patients with $V_A < 80\%$ died about 0.9 years earlier than those with $V_A \geq 80\%$ ($p = 0.033$). The difference in survival time at the 20th percentile was 0.8 years.

Conclusions: V_A is a significant, independent predictor of reduced survival in patients with systolic HF.

Keywords: Systolic heart failure, Alveolar volume, Prognosis, Survival

Background

Heart failure (HF) is a common clinical disorder carrying significant morbidity and mortality [1,2]. Ventilatory impairment is known to occur in patients with HF, and is ascribed to factors such as heart enlargement, pulmonary stiffness due to chronic interstitial edema, and respiratory muscle dysfunction [3-7]. The coexistence of chronic airflow obstruction may add to ventilatory dysfunction, and is believed to have a negative prognostic impact in patients with chronic HF [8].

As of now, most of the studies on the prognostic impact of respiratory dysfunction in HF focused on simple spirometry [9-14], with only a few exploring the exchange of gases across the alveolar-capillary membrane [15,16].

Alveolar volume (V_A) is the volume of air in the lung available for gas exchange, and is currently measured by the dilution of an inert gas during a single breath-hold maneuver [17]. Due to the single-breath approach, such measurement is sensitive to ventilatory disturbances. In healthy subjects, V_A equals total lung capacity (TLC) measured by multiple-breath helium dilution. In subjects with ventilatory impairment, V_A is often much lower

* Correspondence: massimo.miniati@unifi.it

¹Dipartimento di Medicina Sperimentale e Clinica, Università di Firenze, Viale Morgagni 85, 50134 Firenze, Italy

Full list of author information is available at the end of the article

than TLC because of the insufficient mixing of gas in alveolar spaces [18].

We conducted a prospective, observational study aimed at establishing the prognostic value of V_A , as % of the predicted value, in 260 consecutive patients with systolic HF. The outcome measure was all-cause mortality over a median follow-up time of about three years.

Methods

Ethics statement

The protocol was approved by the local ethics committee (Comitato Etico, Azienda Ospedaliero-Universitaria Pisana, Pisa, Italy). Before entering the study, the subjects provided an informed written consent.

Sample

The study sample comprised 260 consecutive patients with an established diagnosis of systolic HF. They were hospitalized at the CNR Institute of Clinical Physiology and "G. Monasterio" Foundation, Pisa, Italy, between January 1, 2000 and December 31, 2007. The diagnosis of HF was based on the Framingham criteria [19], and the finding of a left ventricular ejection fraction (LVEF) <50% at transthoracic echocardiography. Patients were excluded if they had active cancer, recent (within 6 months) acute coronary syndromes, or pulmonary arterial hypertension.

Study protocol

All the patients were evaluated under stable clinical conditions, shortly before hospital discharge. Lung function studies included the measurement of slow (SVC) and forced vital capacity (FVC), forced expiratory volume in one second (FEV_1), and total lung capacity (TLC). At least three spirometric measurements were obtained and the highest values were chosen. Spirometry was performed by experienced technologists in conformity with the ATS/ERS standards [20]. The diagnosis of COPD was based on clinical and spirometric criteria (post-bronchodilator ratio of FEV_1 /SVC below the 5th percentile of predicted value) [21]. The degree of airflow obstruction was categorized as mild, moderate, or severe if FEV_1 was >80%, between 80 and 50%, and <50% of predicted, respectively. Ventilatory restriction was diagnosed if FEV_1 /SVC ratio was normal, and TLC below the 5th percentile of predicted [21]. The diffusing capacity of the lung for carbon monoxide (DL_{CO}) was determined using the single-breath method in conformity with ATS/ERS recommendations [17]. V_A was measured during the single-breath maneuver using helium as the inert gas [17].

Postero-anterior and lateral digital chest radiographs were obtained in all the subjects at the time of lung function testing, and were examined by two of the

authors (MM, SM) for the presence of heart, pulmonary, and pleural abnormalities. On the postero-anterior view, we also measured the cardiothoracic ratio. This was regarded as abnormal if >0.5. We measured the circulating levels of hemoglobin, creatinine, and N-terminal pro-hormone of B-type natriuretic peptide (NT-proBNP). The latter was measured by an electrochemiluminescent sandwich immunoassay using Elecsys 2010 analyser (Roche Diagnostics, Germany) [22]. Medications prescribed at the time of hospital discharge were also recorded.

Follow-up

The 260 patients were followed up until death or March 31, 2009, whichever occurred first. All the subjects were seen periodically at the outpatient clinic of our institution. Whenever required, their family physicians were also contacted. The cause of death was established by reviewing medical records, autopsy findings, or death certificates.

Statistical analysis

Differences between groups were assessed by Fisher's exact test for the categorical variables, and by Mood's median test for the continuous variables. Continuous variables in the text and in the tables are reported as median and interquartile range (IQR). The association between V_A and survival was evaluated with two methods: Cox proportional hazard regression to estimate hazard ratio (HR) for the risk of death, and Laplace regression to estimate the percentiles of survival time [23]. Survival percentiles may offer a comprehensive picture of the covariate effects on survival time while overcoming some of the known interpretational limitations of HR [24]. The main exposure of interest was V_A which was categorized as <80% or \geq 80% of the predicted value. Based on univariate analysis, the following potential confounders were considered: tertiles of age (\leq 61, 62-71, \geq 72 years), New York Heart Association (NYHA) class III-IV, cardiothoracic ratio >0.5, DL_{CO} as % predicted (split in two categories by the median value in the sample), tertiles of NT-proBNP (\leq 787, 788-2058, \geq 2059 pg/mL), persistent atrial fibrillation, COPD comorbidity, use of beta-blockers, and of angiotensin converting enzyme (ACE) inhibitors. The crude and adjusted percentiles, and the hazard ratios and associated 95% confidence intervals (CI) are reported. The proportionality of the hazard in the Cox regression was tested based on the Schoenfeld residuals for each model separately. Two-tailed p-values <0.05 were considered statistically significant throughout. The statistical analysis was performed with Stata version 11 (StataCorp, College Station, TX).

Results

Sample

The baseline characteristics of the study sample are given in Table 1. Based on clinical and spirometric data, COPD was diagnosed in 65 (25%) of 260 cases; airflow obstruction was mild in 11 patients (17%), moderate in 41 (63%), and severe in 13 (20%). In the whole sample, the median value of V_A was 79% of predicted (IQR, 70 to 88%). There was a highly significant, inverse correlation of V_A with NT-proBNP ($r = -0.21$; $p < 0.001$) and cardiothoracic ratio ($r = -0.39$; $p < 0.001$), and a weaker

borderline significant correlation with LVEF ($r = +0.11$; $p = 0.054$).

Table 2 shows the characteristics of the study sample split by V_A category. As compared with patients having $V_A \geq 80\%$, those with $V_A < 80\%$ featured the following statistically significant differences: (a) older age; (b) higher prevalence of NYHA class III-IV, abnormal cardiothoracic ratio, persistent atrial fibrillation, COPD comorbidity, and ventilatory restriction; (c) lower FEV₁ and DL_{CO}; (d) higher levels of NT-proBNP. As regards medical treatment, significantly less patients with $V_A < 80\%$ were prescribed beta-blockers and ACE-inhibitors, and significantly more were on oral anticoagulants than those with $V_A \geq 80\%$.

Table 1 Baseline characteristics of 260 patients with systolic heart failure

Characteristic	Number or Median	(Percent or IQR)
Age, years	68	(58–75)
Male gender	207	(80)
BMI, kg/m ²	26	(24–29)
Current smoker	50	(19)
NYHA class III-IV	84	(32)
LVEF, %	32	(25–40)
Cardiothoracic ratio >0.5	162	(62)
NT-ProBNP, pg/mL	1302	(531–3028)
Hemoglobin, g/dL	13.7	(12.4–14.9)
Creatinine, mmol/L	101	(82–127)
FEV ₁ , % predicted	87	(72–101)
DL _{CO} , % predicted	70	(61–81)
COPD	65	(25)
Ventilatory restriction	53	(20)
Coronary artery disease	115	(44)
Hypertension	141	(54)
Persistent atrial fibrillation	51	(20)
Prior stroke	21	(8)
Diabetes	82	(32)
Dyslipidemia	109	(42)
Beta-blockers	223	(86)
ACE-inhibitors	150	(58)
Angiotensin receptor antagonists	75	(29)
Loop diuretics	225	(87)
Potassium sparing drugs	175	(67)
Warfarin	42	(16)
Implanted pace-maker	35	(13)
Implanted defibrillator	13	(5)

IQR = interquartile range. BMI = body mass index. NYHA = New York Heart Association. LVEF = left ventricular ejection fraction. NT-proBNP = N-terminal pro-hormone of B type natriuretic peptide. FEV₁ = forced expiratory volume in one second. DL_{CO} = diffusing capacity of the lung for carbon monoxide. COPD = chronic obstructive pulmonary disease. ACE = angiotensin converting enzyme.

Radiologic signs of interstitial lung edema were detected in 16% of the patients with $V_A < 80\%$ and in 3% of those with $V_A \geq 80\%$ ($p < 0.001$). Similarly, small pleural effusions prevailed significantly in the lower V_A category than in the other (24% vs 6%, $p < 0.001$), whereas no statistically significant difference was observed as regards the prevalence of radiologic signs of emphysema (11% vs 7%, $p = 0.293$). None of the sampled patients had evidence of overt lung fibrosis.

Survival analysis

Follow-up was completed in all the patients, and had a median duration of 2.7 years (IQR, 1.1 to 4.2 years). The crude mortality rate was 27% (69/260) in the whole sample, 36% (49/135) in patients with $V_A < 80\%$, and 16% (20/125) in those with $V_A \geq 80\%$. The causes of death were: heart failure ($n = 44$), cancer ($n = 9$), respiratory failure ($n = 5$), sudden death ($n = 4$), liver failure ($n = 2$), sepsis ($n = 2$), multiple trauma ($n = 2$), and renal failure ($n = 1$).

Figure 1 shows the estimated cumulative incidence of death which was significantly higher in patients with $V_A < 80\%$ than in the others ($p = 0.032$). The mortality curves are adjusted for age, NYHA class III-IV, cardiothoracic ratio >0.5, NT-proBNP, persistent atrial fibrillation, DL_{CO} as % predicted, and COPD comorbidity.

Table 3 describes the regression estimates of the HR of death for the two categories of V_A . The unadjusted HR of death in patients with $V_A < 80\%$ was 2.3-fold higher than in those with $V_A \geq 80\%$ ($p = 0.002$). After adjusting for potential confounders, the HR of death decreased to 1.9 but remained statistically significant ($p = 0.039$).

Laplace regression estimates of the percentiles of survival by V_A category are displayed in Figure 2. They are adjusted for age, NYHA class III-IV, cardiothoracic ratio >0.5, NT-proBNP, persistent atrial fibrillation, DL_{CO} as % predicted, and COPD comorbidity. Two percent of the patients with $V_A < 80\%$ died about 0.9 years earlier than those with $V_A \geq 80\%$ ($p = 0.033$). The difference at the 20th percentile was 0.8 years.

Table 2 Study sample split by alveolar volume

Characteristic	Alveolar volume (% predicted)				P-value
	<80 (n = 135)		≥80 (n = 125)		
Age, years	71	(66–77)	64	(55–71)	<0.001
Male gender	109	(81)	98	(78)	0.648
BMI, kg/m ²	26	(24–29)	26	(23–30)	1.000
Current smoker	21	(16)	29	(23)	0.157
NYHA class III-IV	57	(42)	27	(22)	<0.001
LVEF, %	30	(25–38)	33	(25–40)	0.710
Cardiothoracic ratio >0.5	93	(69)	69	(55)	0.029
NT-ProBNP, pg/mL	1607	(811–3878)	982	(297–2141)	0.003
Hemoglobin, g/dL	13.6	(12.5–14.7)	13.7	(12.4–15.0)	0.552
Creatinine, mmol/L	105	(82–137)	97	(82–114)	0.139
FEV ₁ , % predicted	78	(65–87)	99	(90–109)	<0.001
DL _{CO} , % predicted	66	(53–75)	76	(68–92)	<0.001
COPD	42	(31)	23	(18)	0.022
Ventilatory restriction	53	(39)	0	(0)	<0.001
Coronary artery disease	66	(49)	49	(39)	0.134
Hypertension	75	(56)	66	(53)	0.709
Persistent atrial fibrillation	34	(25)	17	(14)	0.020
Prior stroke	10	(7)	11	(9)	0.821
Diabetes	44	(33)	38	(30)	0.790
Dyslipidemia	52	(39)	57	(44)	0.260
Beta-blockers	107	(79)	116	(93)	0.002
ACE-inhibitors	69	(51)	81	(65)	0.033
Angiotensin receptor antagonists	40	(30)	35	(28)	0.786
Loop diuretics	117	(87)	108	(86)	1.000
Potassium sparing drugs	84	(62)	91	(73)	0.085
Warfarin	28	(21)	14	(11)	0.043
Implanted pace-maker	20	(15)	15	(12)	0.589
Implanted defibrillator	5	(4)	8	(6)	0.398

Data are numbers (%), or medians (interquartile range). For abbreviations see Table 1.

So, the frailest were the most affected individuals by reduced V_A .

Discussion

The present study was designed to establish whether V_A , as percent of the predicted value, is a prognostic indicator in systolic HF. Our results can be summarized thus: (a) the cumulative incidence of death is significantly higher in patients with $V_A < 80\%$ predicted than in those with $V_A \geq 80\%$; (b) the estimated HR of death is about two-fold greater among the patients in the lower V_A category, and remains significantly higher after adjusting for relevant confounding variables; (c) as indicated by Laplace regression, reduced V_A is strongly associated with early deaths.

We found a significant, inverse correlation between V_A and cardiothoracic ratio. This suggests that heart enlargement is a major determinant of reduced V_A in chronic HF. Generalized stiffness of the lung parenchyma may also contribute to diminish V_A . Such reduced lung distensibility is due to chronic interstitial edema, and pulmonary vascular remodeling that are known to occur in long-standing HF [25].

We also observed that V_A is significantly correlated with the circulating levels of NT-proBNP, an established prognostic biomarker of HF [2]. After adjusting for NT-proBNP, the HR of death associated with reduced V_A remains statistically significant so indicating that V_A is an independent predictor of survival.

A number of studies investigated on simple spirometry as a potential indicator of future cardiovascular events.

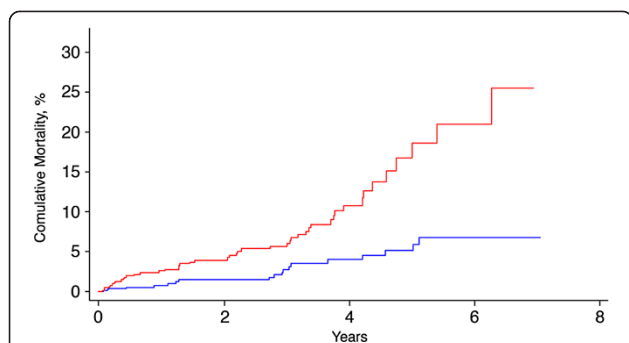


Figure 1 Estimated cumulative mortality in the study sample split by alveolar volume (V_A) as % predicted: $V_A < 80\%$ (red step curve); $V_A \geq 80\%$ (blue step curve). Estimates are adjusted for age, NYHA class III-IV, cardiothoracic ratio > 0.5 , NT-proBNP, persistent atrial fibrillation, DL_{CO} as % predicted, and COPD comorbidity. P-value by log-rank test = 0.032.

In the setting of the Framingham Study, Kannel et al. observed that FVC is a significant, independent predictor of cardiovascular morbidity and mortality in allegedly healthy subjects [9]. Later, Kannel et al. reported that FVC is a predictor of subsequent cardiac failure in individuals with coronary artery disease and left ventricular hypertrophy [10].

In recent years, there has been increasing interest in evaluating the prognostic impact of COPD comorbidity in patients with chronic HF. Mascarenhas et al. [11] conducted a retrospective study in 186 patients with systolic HF, and found no significant association between having COPD and all-cause mortality (HR 1.40, 95% CI 0.88 to 2.44). Only severe airflow obstruction ($FEV_1 < 50\%$ of predicted value) appeared to be a predictor of reduced survival (HR 2.10, 95% CI 1.05 to 4.22) [11]. In 527 patients with a clinical diagnosis of HF, Iversen et al. reported that FEV_1 has independent prognostic value (HR 0.86 per 10% change with respect to the predicted value, $p < 0.001$) [12]. By contrast, Macchia et al. estimated an adjusted HR of death of 0.77 (95% CI, 0.37 to 1.58) in patients with systolic HF and concomitant chronic airway obstruction, suggesting that COPD has no significant bearing on survival [13]. The three studies differ

Table 3 Estimated hazard ratios of death by alveolar volume category

Model	$V_A < 80\%$ versus $V_A \geq 80\%$		P-value
	Hazard ratio	95% CI	
1	2.31	(1.37–3.90)	0.002
2	1.90	(1.03–3.50)	0.039

V_A = alveolar volume (as % predicted). CI = confidence interval.

Model 1: unadjusted.

Model 2: adjusted for age, NYHA class III-IV, NT-proBNP, cardiothoracic ratio > 0.5 , persistent atrial fibrillation, DL_{CO} as % predicted, COPD comorbidity, use of beta-blockers and of ACE-inhibitors.

For abbreviations, see Table 1.

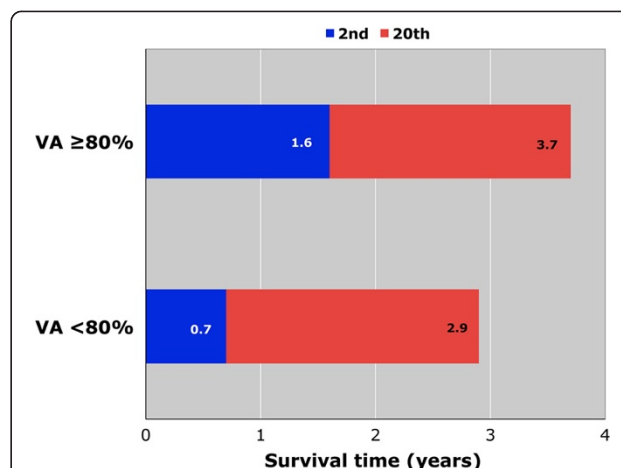


Figure 2 Laplace regression estimates of the 2nd and 20th percentile of survival time in the sample split by alveolar volume (V_A) as % predicted ($< 80\%$ vs $\geq 80\%$). Estimates are adjusted for age, NYHA class III-IV, cardiothoracic ratio > 0.5 , NT-proBNP, persistent atrial fibrillation, DL_{CO} as % predicted, and COPD comorbidity.

substantially for proportion of severe airflow obstruction, NYHA class III-IV, and duration of follow-up, and this may explain the inconsistent results obtained as regards the prognostic impact of COPD in HF.

Recently, Miniati et al. reported that a reduction of FEV_1 – be it due to airflow obstruction or ventilatory restriction – is a significant, independent predictor of reduced survival in 439 patients with systolic HF [14]. In that study, the adjusted HR of death was 1.8-fold higher in patients with $FEV_1 < 80\%$ predicted as compared with those having $FEV_1 \geq 80\%$ [14].

As of now, limited data is available on the prognostic relevance of lung function tests other than spirometry. It is well established that chronic HF brings about extensive remodeling of the pulmonary intra-alveolar vessels and interstitium [26], which may hamper the exchange of gases across the alveolar-capillary barrier [15]. In 106 patients with systolic HF, Guazzi and coworkers reported that alveolar-capillary membrane conductance of less than 24.7 mL/min/mmHg is significantly and independently associated with a worse outcome [16]. Partitioning of lung diffusing capacity into its membrane and capillary blood volume components requires the determination of DL_{CO} at two different concentrations of oxygen in the inspired test bolus [15,16]. This technique is seldom used in routine clinical practice.

V_A represents an estimate of the lung gas volume into which CO is distributed and, therefore, is critical in the measurement of DL_{CO} with the single-breath approach [17]. In the presence of uneven distribution of ventilation, due to altered lung distensibility or airflow obstruction, V_A primarily reflects the volume of the airspaces

into which the tracer gas rapidly equilibrates during the breath-hold time [17]. The estimated volume can, therefore, be regarded as reflecting the size of the well-ventilated lung regions. As shown in Table 2, spirometrically determined ventilatory restriction, was present in only 53 (39%) of 135 patients with $V_A < 80\%$ predicted. So, we believe that measuring V_A may add valuable information as regards lung function assessment in patients with systolic HF.

Undoubtedly, factors other than V_A affect the lung diffusing capacity, including the physical properties of the alveolar membrane, the density of alveolar capillaries, and the hemoglobin concentration [17]. Thus, in multivariate analysis, we incorporated DL_{CO} among the potential confounding variables. After adjustment, the HR of death associated with the lower V_A category remained statistically significant.

Study limitations

First, we only studied patients with systolic HF, so our findings may not apply to patients with isolated diastolic heart dysfunction. Second, our data originated from a single referral center, and included a relatively small number of cases. Broader multicenter prospective studies are needed to firmly establish the prognostic value of V_A in HF. Third, we obtained a single determination of V_A . So, it would of interest to evaluate the effect of cardiovascular and pulmonary medications on V_A size over time, and to test whether improvement in V_A is associated with a better outcome in patients with chronic HF.

Conclusions

The present study indicates that V_A , as percent of the predicted value, is a significant, independent predictor of reduced survival in patients with systolic HF.

Competing interests

The authors declare that they have no competing interests.

Authors' contribution

Study design (MM). Data collection (CP, ME, RP, IP). Data analysis (MM, SM, MB). Drafting the manuscript (MM). Approval of the final version of the manuscript (all authors).

Acknowledgments

The authors wish to thank Concetta Prontera for the assay of NT-proBNP, Luca Serasini and Mirko Passera for preparing the artwork. Permission was obtained from those who are acknowledged.

Funding

No external funding was received for this study.

Author details

¹Dipartimento di Medicina Sperimentale e Clinica, Università di Firenze, Viale Morgagni 85, 50134 Firenze, Italy. ²Istituto di Fisiologia Clinica del CNR, Pisa, Italy. ³Fondazione CNR-Regione Toscana "G. Monasterio", Pisa, Italy. ⁴Unit of Biostatistics, Karolinska Institutet, Stockholm, Sweden. ⁵Division of Biostatistics, Arnold School of Public Health, University of South Carolina, Columbia, SC, USA. ⁶Scuola Superiore di Studi Universitari e Perfezionamento "S. Anna", Pisa, Italy.

Received: 26 January 2013 Accepted: 4 November 2013
Published: 22 November 2013

References

- Goldberg RJ, Ciampa J, Lessard D, Meyer TE, Spencer FA: **Long-term survival after heart failure. A contemporary population-based perspective.** *Arch Intern Med* 2007, **167**:490–496.
- Dickstein K, Cohen-Solal A, Filippatos G, McMurray JVV, Ponikovski P, Poole-Wilson PA, Strömberg A, van Veldhuisen DJ, Atar D, Hoes AW, Keren A, Mebazaa A, Nieminen A, Piori SG, Swedberg K: **ESC guidelines for the diagnosis and treatment of acute and chronic heart failure 2008: the Task Force for the diagnosis and treatment of acute and chronic heart failure of the European Society of Cardiology. Developed in collaboration with the Heart Failure Association of the ESC (HFA) and endorsed by the European Society of Intensive Care Medicine (ESICM).** *Eur Heart J* 2008, **29**:2388–2442.
- Hosenpud JD, Stibolt TA, Atwal K, Shelley D: **Abnormal pulmonary function specifically related to congestive heart failure: comparison of patients before and after cardiac transplantation.** *Am J Med* 1990, **88**:493–496.
- Naum CC, Sciruba FC, Rogers RM: **Pulmonary function abnormalities in chronic severe cardiomyopathy preceding heart transplantation.** *Am Rev Respir Dis* 1992, **145**:1334–1338.
- Wasserman K, Zhang YY, Gitt A, Belardinelli R, Koike A, Lubarsky L, Agostoni PG: **Lung function and exercise gas exchange in chronic heart failure.** *Circulation* 1997, **96**:2221–2227.
- Meyer FJ, Borst MM, Zugck C, Kirschke A, Shellenberg D, Kubler W, Haass M: **Respiratory muscle dysfunction in congestive heart failure: clinical correlation and prognostic significance.** *Circulation* 2001, **103**:2153–2158.
- Olson TP, Kenneth CB, Johnson BD: **Pulmonary function changes associated with cardiomegaly in chronic heart failure.** *J Card Fail* 2007, **13**:100–107.
- Hawkins NM, Petrie MC, Jhund PS, Chalmers GW, Dunn FG, McMurray JJ: **Heart failure and chronic obstructive pulmonary disease: diagnostic pitfalls and epidemiology.** *Eur J Heart Fail* 2009, **11**:130–139.
- Kannel WB, Hubert H, Lew FA: **Vital capacity as a predictor of cardiovascular disease: the Framingham Study.** *Am Heart J* 1983, **105**:311–315.
- Kannel WB, D'Agostino RB, Silbershatz H: **Use of vital capacity for cardiac failure risk estimation in persons with coronary disease and left ventricular hypertrophy.** *Am J Cardiol* 1996, **77**:1155–1158.
- Mascarenhas J, Lourenço P, Lopes R, Azevedo A, Bettencourt P: **Chronic obstructive pulmonary disease in heart failure. Prevalence, therapeutic and prognostic implications.** *Am Heart J* 2008, **155**:521–525.
- Iversen KK, Kjaergaard J, Akkan D, Kober L, Torp-Pedersen C, Hassager C, Vestbo J, Kjoller E, ECHOS-Lung Function Study Group: **The prognostic importance of lung function in patients admitted with heart failure.** *Eur J Heart Fail* 2010, **12**:685–691.
- Macchia A, Rodriguez Moncalvo JJ, Kleinert M, Comignani PD, Gimeno G, Arakaki D, Laffaye N, Fuselli JJ, Massolin HP, Gambarte J, Romero M, Tognoni G: **Unrecognized ventricular dysfunction in COPD.** *Eur Respir J* 2012, **39**:51–58.
- Miniati M, Monti S, Bottai M, Passino C, Emdin M, Poletti R: **Forced expiratory volume in one second: prognostic value in systolic heart failure.** *Int J Cardiol* 2013. <http://dx.doi.org/10.1016/j.ijcard.2013.01.170>.
- Puri S, Baker BL, Oakley CM, Hughes JMB, Cleland JGF: **Increased alveolar/capillary membrane resistance in patients with chronic heart failure.** *Br Heart J* 1994, **72**:140–144.
- Guazzi M, Pontone G, Brambilla R, Agostoni P, Reina G: **Alveolar-capillary membrane conductance: a novel prognostic indicator in chronic heart failure.** *Eur Heart J* 2002, **23**:467–476.
- MacIntyre N, Crapo RO, Viegi G, Johnson DC, van der Grinten CPM, Brusasco V, Burgos F, Casaburi R, Coates A, Enright P, Gustafsson P, Hankinson J, Jensen R, McKay R, Miller MR, Navajas D, Pedersen OF, Pellegrino R, Wanger J: **Standardisation of the single-breath determination of carbon monoxide uptake in the lung.** *Eur Respir J* 2005, **26**:720–735.
- Roberts CM, MacRae KD, Seed WA: **Multibreath and single breath helium dilution lung volumes as a test of airway obstruction.** *Eur Respir J* 1990, **3**:515–520.
- McKee PA, Castelli WP, McNamara PM, Kannel WB: **The natural history of congestive heart failure: the Framingham study.** *N Engl J Med* 1971, **285**:1441–1446.

20. Miller MR, Hankinson J, Brusasco V, Burgos F, Casaburi R, Coates A, Crapo R, Enright P, van der Grinten CP, Gustafsson P, Jensen R, Johnson DC, MacIntyre N, McKay R, Navajas D, Pedersen OF, Pellegrino R, Viegi G, Wanger J: **Standardisation of spirometry**. *Eur Respir J* 2005, **26**:319–338.
21. Pellegrino R, Viegi G, Brusasco V, Crapo RO, Burgos F, Casaburi R, Coates A, van der Grinten CP, Gustafsson P, Hankinson J, Jensen R, Johnson DC, MacIntyre N, McKay R, Miller MR, Navajas D, Pedersen OF, Wanger J: **Interpretative strategies for lung function tests**. *Eur Respir J* 2005, **26**:948–968.
22. Prontera C, Emdin M, Zucchelli GC, Ripoli A, Passino C, Clerico A: **Natriuretic peptides (NPs): automated electrochemiluminescent immunoassay for N-terminal pro-BNP compared with IRMA for ANP and BNP in heart failure patients and healthy individuals**. *Clin Chem* 2003, **49**:1552–1554.
23. Bottai M, Zhang J: **Laplace regression with censored data**. *Biometrical J* 2010, **52**:487–503.
24. Hernán MA: **The hazard of hazard ratios**. *Epidemiology* 2010, **21**:13–15.
25. Wagenvoort CA, Mooi WJ: *Biopsy Pathology of the Pulmonary Vasculature*. London: Chapman & Hall; 1989:170–198.
26. Bachofen H, Bachofen M, Weibel ER: **Ultrastructural aspects of pulmonary edema**. *J Thorac Imag* 1988, **3**:1–7.

doi:10.1186/1471-2466-13-69

Cite this article as: Miniati et al.: Prognostic value of alveolar volume in systolic heart failure: a prospective observational study. *BMC Pulmonary Medicine* 2013 **13**:69.

**Submit your next manuscript to BioMed Central
and take full advantage of:**

- Convenient online submission
- Thorough peer review
- No space constraints or color figure charges
- Immediate publication on acceptance
- Inclusion in PubMed, CAS, Scopus and Google Scholar
- Research which is freely available for redistribution

Submit your manuscript at
www.biomedcentral.com/submit

