

CORRECTION

Open Access



Correction: Clinical characteristics and predictors of pulmonary hypertension in chronic obstructive pulmonary disease at different altitudes

Lixia Wang^{1†}, Faping Wang^{1†}, Yajun Tuo², Huajing Wan³ and Fengming Luo^{1*}

Correction: *BMC Pulm Med* 23, 127 (2023)
<https://doi.org/10.1186/s12890-023-02405-8>

Following publication of the original article [1], it was brought to the publisher's attention that Fig. 3 had been replaced by a duplication of the data of Fig. 2. Figure 3 has now been corrected in the published article and a copy of the figure may be seen in this erratum.

The publisher thanks you for reading this erratum and apologizes for any inconvenience caused by this figure processing error.

Reference

1. Wang L, et al. Clinical characteristics and predictors of pulmonary hypertension in chronic obstructive pulmonary disease at different altitudes. *BMC Pulm Med.* 2023;23:127. <https://doi.org/10.1186/s12890-023-02405-8>.

Published online: 05 June 2023

[†]Lixia Wang and Faping Wang contributed equally to this work.

The original article can be found online at <https://doi.org/10.1186/s12890-023-02405-8>.

*Correspondence:

Fengming Luo
fengmingluo@outlook.com

¹ Department of Respiratory and Critical Care Medicine, West China Hospital, Sichuan University, Chengdu, Sichuan, China

² Department of Respiratory and Critical Care Medicine, Qinghai Provincial People's Hospital, Xining, China

³ Laboratory of Pulmonary Immunology and Inflammation, Frontiers Science Center for Disease-Related Molecular Network, West China Hospital, Sichuan University, Chengdu, Sichuan, China



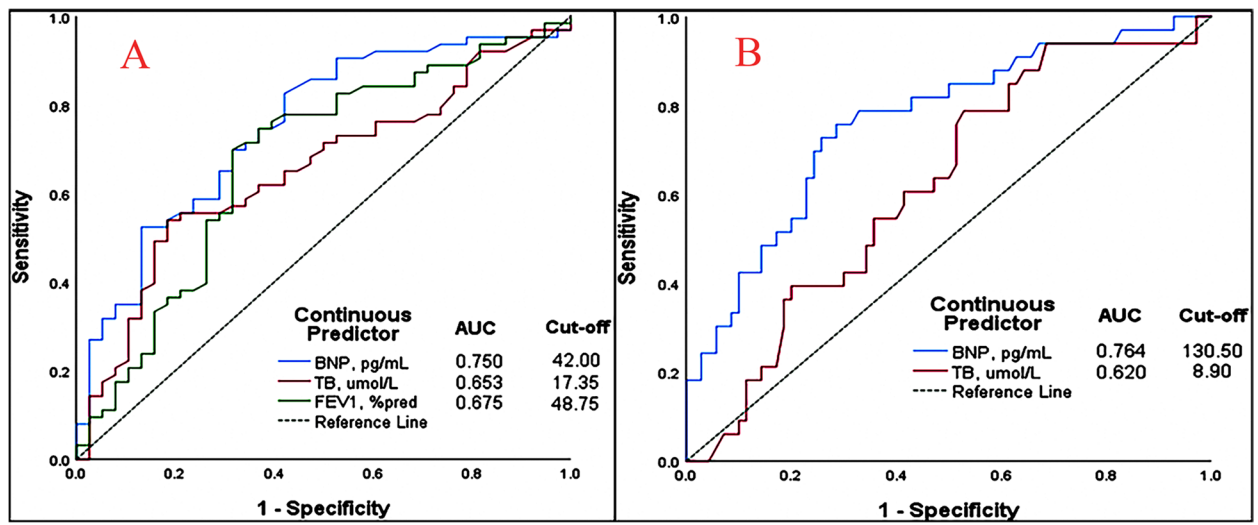


Fig. 3 ROC curve of skewed distribution variables for logistic regression analysis and cut-off of the variables. **A** at LA. **B** at HA. ROC, Receiver operator characteristic. AUC, area under the curve