

CORRECTION

Open Access



Correction to: Baseline plasma KL-6 level predicts adverse outcomes in patients with idiopathic pulmonary fibrosis receiving nintedanib: a retrospective real-world cohort study

Tang-Hsiu Huang^{1,2}, Chin-Wei Kuo^{1,2}, Chian-Wei Chen¹, Yau-Lin Tseng³, Chao-Liang Wu⁴ and Sheng-Hsiang Lin^{2,5,6*}

Correction to: *BMC Pulm Med* (2021) 21:165
<https://doi.org/10.1186/s12890-021-01530-6>

Following publication of the original article [1], it was brought to our attention that panel 'e' was missing from

Fig. 2; the figure has since been corrected in the published article.

The original article can be found online at <https://doi.org/10.1186/s12890-021-01530-6>.

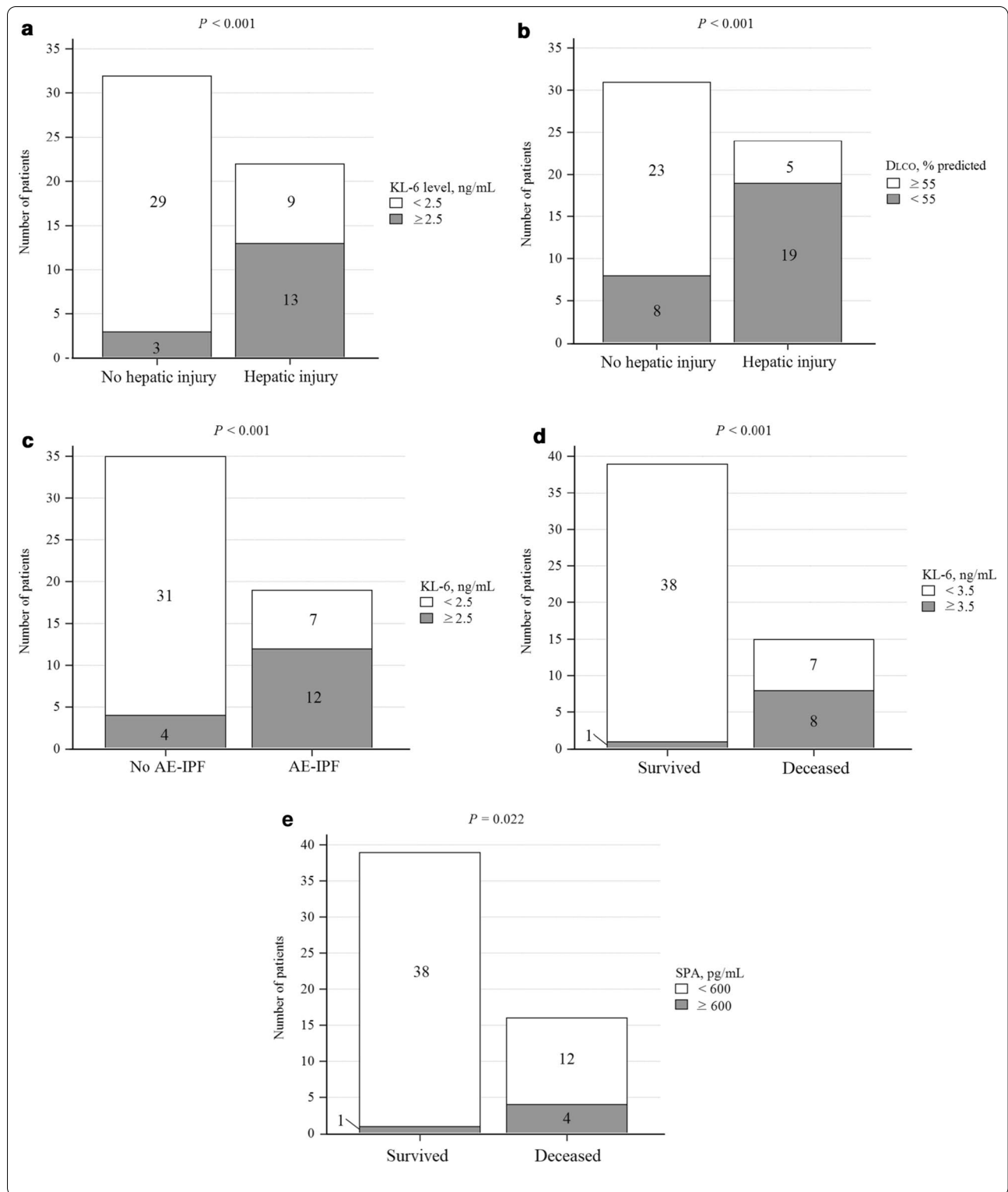
*Correspondence: shlin922@mail.ncku.edu.tw

² Institute of Clinical Medicine, College of Medicine, National Cheng Kung University, Tainan, Taiwan

Full list of author information is available at the end of the article



© The Author(s) 2021. **Open Access** This article is licensed under a Creative Commons Attribution 4.0 International License, which permits use, sharing, adaptation, distribution and reproduction in any medium or format, as long as you give appropriate credit to the original author(s) and the source, provide a link to the Creative Commons licence, and indicate if changes were made. The images or other third party material in this article are included in the article's Creative Commons licence, unless indicated otherwise in a credit line to the material. If material is not included in the article's Creative Commons licence and your intended use is not permitted by statutory regulation or exceeds the permitted use, you will need to obtain permission directly from the copyright holder. To view a copy of this licence, visit <http://creativecommons.org/licenses/by/4.0/>. The Creative Commons Public Domain Dedication waiver (<http://creativecommons.org/publicdomain/zero/1.0/>) applies to the data made available in this article, unless otherwise stated in a credit line to the data.



Author details

¹Division of Chest Medicine, Department of Internal Medicine, National Cheng Kung University Hospital, College of Medicine, National Cheng Kung University, Tainan, Taiwan. ²Institute of Clinical Medicine, College of Medicine, National Cheng Kung University, Tainan, Taiwan. ³Division of Thoracic Surgery, Department of Surgery, National Cheng Kung University Hospital, College of Medicine, National Cheng Kung University, Tainan, Taiwan. ⁴Department of Biochemistry and Molecular Biology, College of Medicine, National Cheng Kung University, Tainan, Taiwan. ⁵Department of Public Health, College of Medicine, National Cheng-Kung University, Tainan, Taiwan. ⁶Biostatistics Consulting Center, National Cheng Kung University Hospital, College of Medicine, National Cheng-Kung University, Tainan, Taiwan.

Published online: 08 June 2021

Reference

1. Huang TH, Kuo CW, Chen CW, et al. Baseline plasma KL-6 level predicts adverse outcomes in patients with idiopathic pulmonary fibrosis receiving nintedanib: a retrospective real-world cohort study. *BMC Pulm Med.* 2021;21:165. <https://doi.org/10.1186/s12890-021-01530-6>.

Publisher's Note

Springer Nature remains neutral with regard to jurisdictional claims in published maps and institutional affiliations.

Ready to submit your research? Choose BMC and benefit from:

- fast, convenient online submission
- thorough peer review by experienced researchers in your field
- rapid publication on acceptance
- support for research data, including large and complex data types
- gold Open Access which fosters wider collaboration and increased citations
- maximum visibility for your research: over 100M website views per year

At BMC, research is always in progress.

Learn more biomedcentral.com/submissions

